

Notes

This drawing is copyright and owned by Bailey Partnership, and is for use on this project and site only unless contractually stated otherwise.

DO NOT SCALE this drawing (printed or electronic versions). Contractors must check all dimensions from site.

All other design team elements, where indicated, have been imported from the consultant's drawings and reference should be made to the individual consultant's drawings for exact setting out, size and type of component.

Discrepancies and / or ambiguities within this drawing, between it and information given elsewhere, must be reported immediately to the architect for clarification before proceeding.

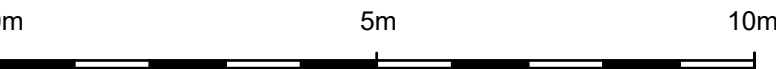
All works are to be carried out in accordance with the latest British Standards and Codes of Practice unless specifically directed otherwise in the specification.

Responsibility for the reproduction of this drawing in paper form, or if issued in electronic format, lies with the recipient to check that all information has been replicated in full and is correct when compared to the original paper or electronic image. Graphical representations of equipment on this drawing have been co-ordinated, but are approximations only. Please refer to the Specifications and / or Details for actual sizes and / or specific contractor construction information. Ordnance Survey Paper Map Copying License number: 40006119

This original document is issued for the purpose indicated below and contains information of confidential nature. Further copies and circulation will be strictly in accordance with the confidentiality agreement under the contract.

SAFETY, HEALTH AND ENVIRONMENTAL INFORMATION
Refer to the relevant Construction (Design and Management) documentation where applicable.

It is assumed that all works on this drawing will be carried out by a competent contractor, working where appropriate to an approved method statement.



Materials:

- Walls - Rock panel Rock Clad or Cembrit cladding or similar with staggered joints, colours Stone Grey/Light Grey. Internal leaf to comprise metsec inner leaf with plasterboard finish.
- Roof - Euroclad Elite 3 metal profile roof or similar, colour to be Merlin Grey RAL 180 40 05 or similar.
- Windows - Dark grey aluminium, colour RAL 7021 Curtain Walling - Dark grey 50mm profile aluminium glazing system.
- Rainwater goods: PPC aluminum box gutter and downpipes, colours and profiles Dark Grey RAL 7021, or similar
- Plinth: Brickwork plinth, Brunel Blue Smooth
- Link Canopy: PPC Steel Dark Grey RAL 7021 with multiwall polycarbonate roof cladding with coloured vinyl film in select locations (final locations TBC) & Post protectors (colour TBC)

- Spandrel Panels, colour Yellow RAL 1018
- Highly reflective panels such as ceramic coated glass or similar to RAL 7021

| | |
|---|--------------------------|
| C2 Contractors Proposal - For Construction | NM/SJC/SJC 17.03.17 |
| C1 Contractors Proposal - Additional notes regarding Link canopy added. | NM/SJC/SJC 14.03.17 |
| C0 Contractors Proposal - Preliminary Issue | CNM/SJC/SJC 21.11.16 |
| T0 First Issue | CNM SJC 27.09.16 |
| Rev Description | / By / Chkd / App'd Date |

baileypartnership

CONSTRUCTION AND PROPERTY CONSULTANTS

www.baileypartnership.co.uk

Client

Kier Construction

Project

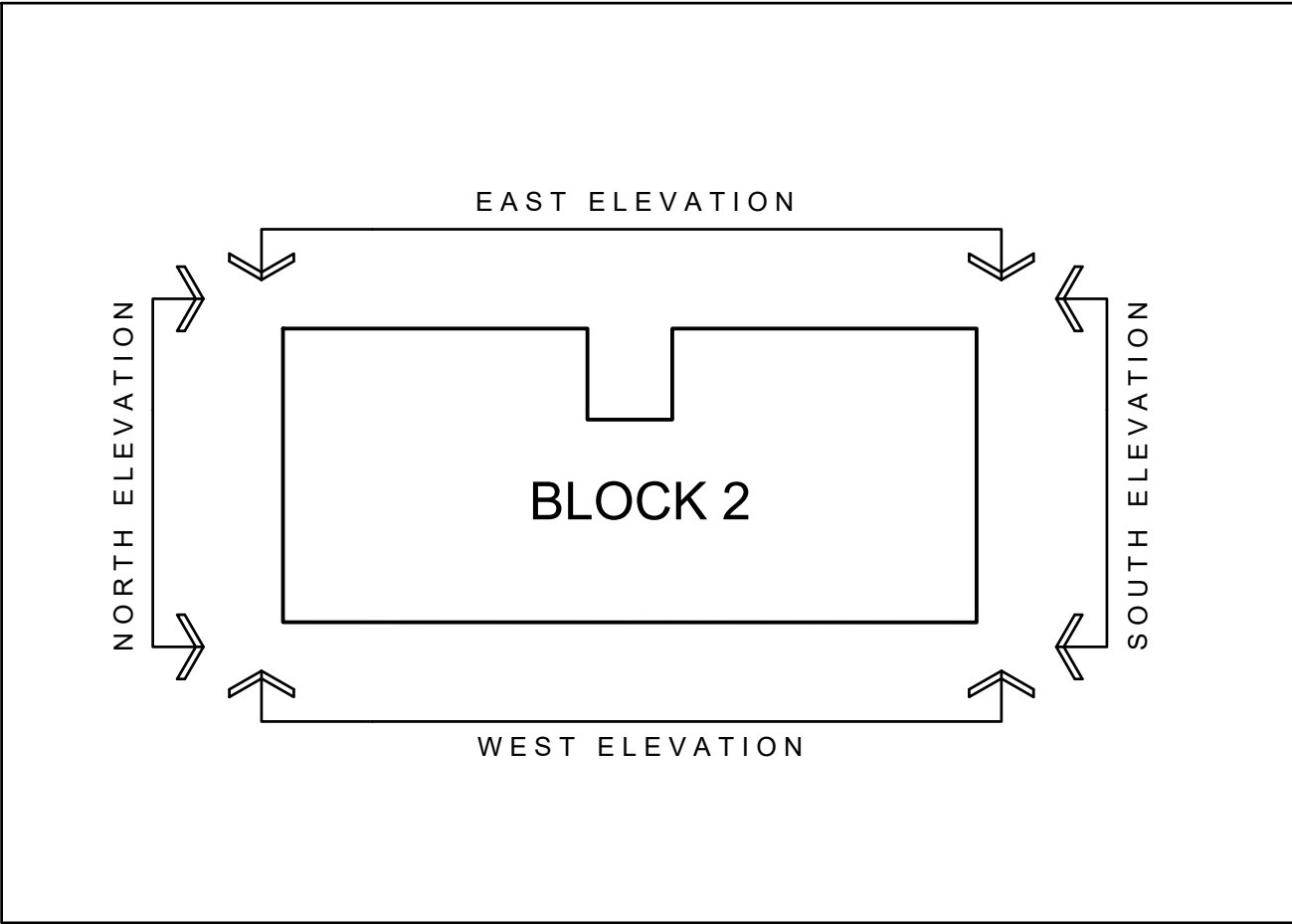
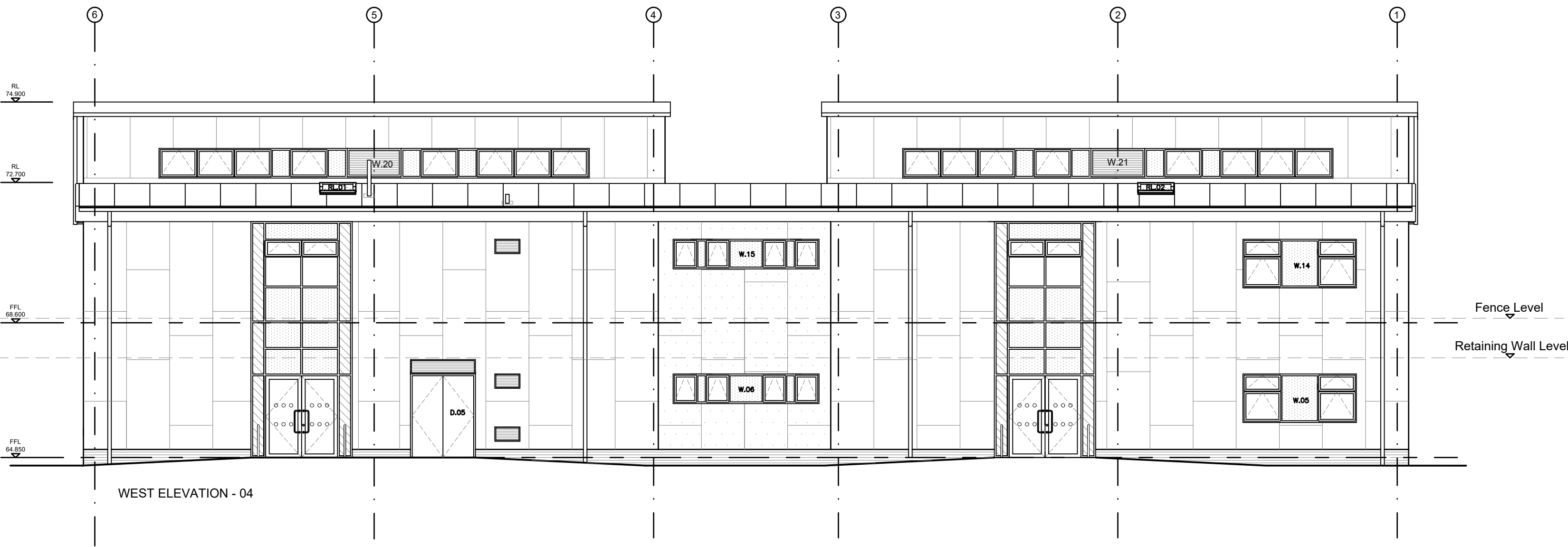
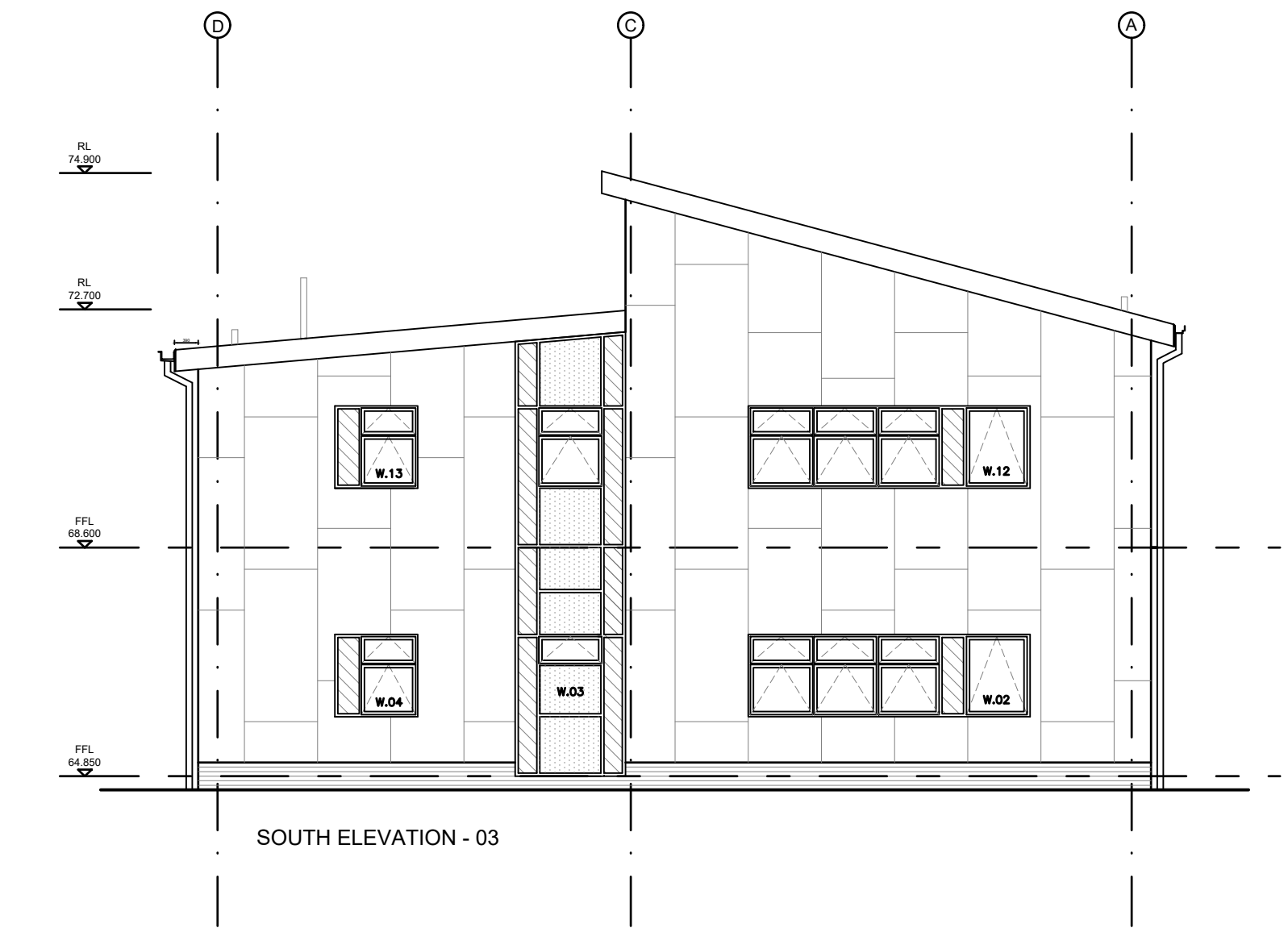
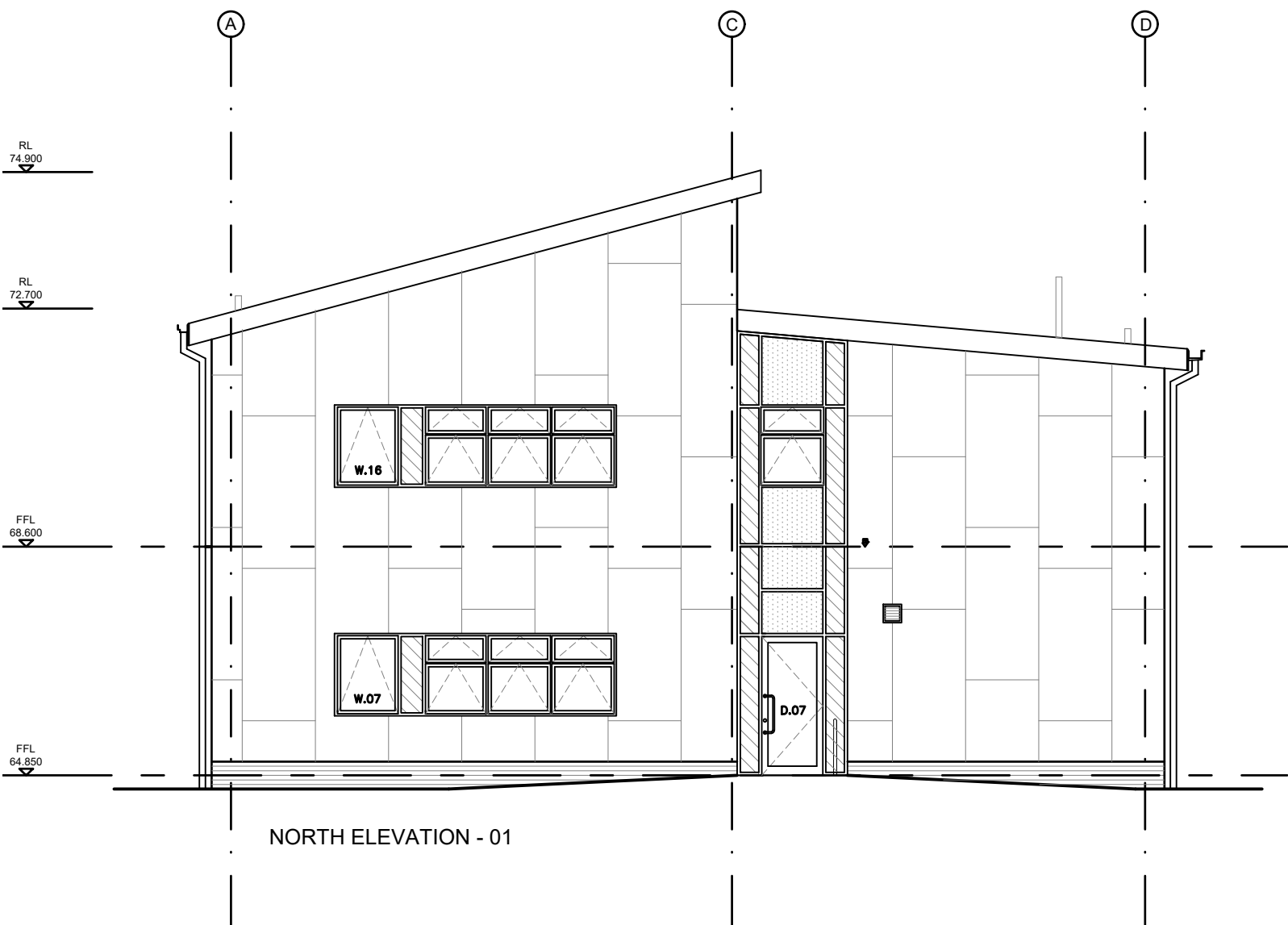
Sandy Hill Academy
Sandy Hill St Austell,
Cornwall, PL25 3AT

Drawing Title

Block 2
Proposed GA Elevations

| | | | |
|-----------------------|------------|----------|----------|
| Purpose of Issue | | Status | |
| Contractors Proposals | | S2 | |
| Project No. | Scale @ A1 | Date | |
| 28206 | 1:100 | 21.11.16 | |
| Revision | Drawn | Checked | Approved |
| C2 | CNM | SJC | SJC |

| | | | |
|-----------------------|--------|--------------------------------|--------|
| A1 Drawing Identifier | | BS1192:2007 / Avanti Compliant | |
| project | origin | zone | level |
| SHA | BP | 02 | XX |
| file type | | role | number |
| | | A | 062001 |



SECTION KEY